



MISSION:
CRUSH POVERTY

CONTINUES



United Way of Erie County



United Way is a local social impact organization working to break the cycle of poverty in Erie County.

The money
RAISED in Erie County
STAYS in Erie County!



To break the cycle of poverty,
we know education is the key.

United
Way



United Way of Erie County

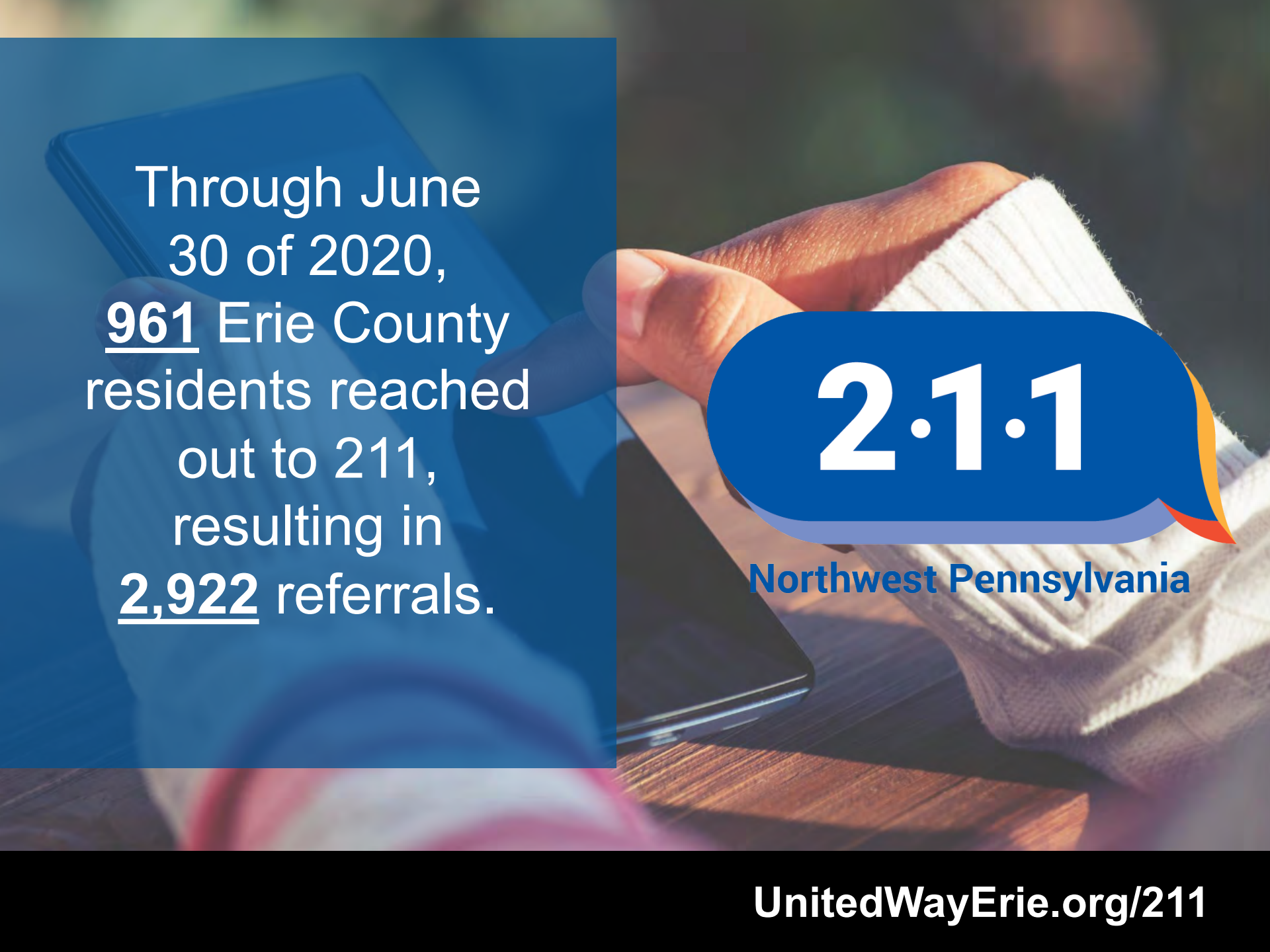


UNITED WAY'S COVID-19 RESPONSE



**Mobilizing people and resources to support
those struggling to get by in our
community during these challenging times.**

UnitedWayErie.org/COVID-19-Updates



Through June
30 of 2020,
961 Erie County
residents reached
out to 211,
resulting in
2,922 referrals.

2·1·1

Northwest Pennsylvania

UnitedWayErie.org/211

Partnering with **ServErie**,
United Way's 211 helpline
was used as the central point
of contact for people able
to volunteer.

The result – **284** volunteers
were connected to **eight**
local nonprofits, enabling
them to continue their vitally
important work during
COVID-19.



UnitedWayErie.org/211



ERIE FAMILY CENTER



United Way of Erie County		United Way 
Pay to the order of	Diaper Depot	\$10,000
ten thousand and 00/100 —		Dollars
MISSION: CRUSH POVERTY		United Way
LIVE UNITED		



Through United Way's **Emergency Relief Fund** contributions were made that resulted in grants to **42** local organizations, most recently a **\$10,000** grant to the Erie Family Center for their **Diaper Depot** program.



MISSION:
CRUSH POVERTY

CONTINUES



United Way of Erie County

STUDENT SUCCESS

- Imagination Library
- United Way Scholarships Through Erie's Future Fund
- Success By 6
- Community Schools
- Raising Readers
- Positive Youth Development
- ...and so much more!



IMAGINATION LIBRARY

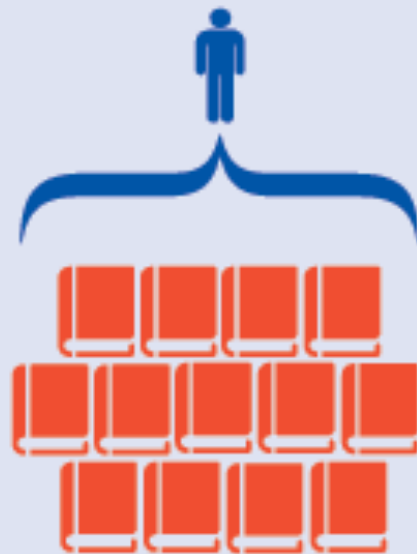
Having books from birth brings joy to children and sets them up for success in school!



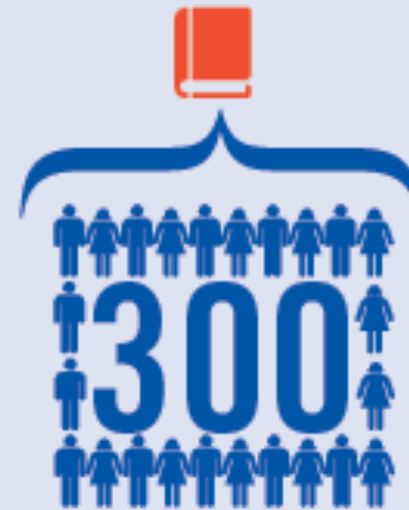
UnitedWayErie.org/Imagination

AGE-APPROPRIATE BOOKS PER CHILD

Middle-Income:
13 books per child



Low-Income:
1 book for every 300 children





IMAGINATION LIBRARY

***Since July 2013,
more than 22,898
children served and
754,843 books
distributed in Erie
County!***

UnitedWayErie.org/Imagination



School Readiness

School Attendance

Summer Learning

BARRIER BEAST



trauma

bullying

**unsafe home
environment**

mental health

transportation

hygiene

hunger

homelessness

poor eye sight

**improper
clothes**

WHAT ARE COMMUNITY SCHOOLS?

The Community Schools Model aligns community and school resources to address the specific barriers preventing students, and their families, from being successful.

This evidence-based model supports student success by ***removing the Barrier Beast!***

LIVE UNITED

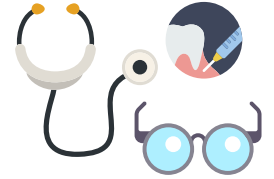


United Way of Erie County

A COMMUNITY SCHOOL



Food & Nutrition



Vision, Medical & Dental



Clothes



Behavioral Health



Safe Routes to School



Arts & Music



Supplies & Resources



Family Literacy



SCHOOL IN ERIE COUNTY





FAMILY STABILITY

- 211 Helpline
- Erie FREE Taxes
- FamilyWize Prescription Discount Program
- Emergency Needs





Northwest Pennsylvania

Free 24/7 Helpline

211 connects you to information about:

- Aging Services
- Youth Services
- Counseling
- Education/Training
- Food/Shelter/Clothing
- Health Services
- Parenting
- Support Groups
- Substance Abuse
- and much more!

ALWAYS FREE & ALWAYS CONFIDENTIAL

UnitedWayErie.org/211

WHERE THE MONEY GOES

Program/Service	Provider	Investment
211	PA 211 Southwest	\$114,000
Behavior Support Services	Achievement Center	\$28,700
Collective Impact Coordination Services	United Way Community Schools	\$353,900
Community School Blended Case Management Services	United Way, UPMC Western Behavioral Health at Safe Harbor, Gannon University	\$268,225
Diehl Elementary Community School Coordination Services	Mercyhurst University	\$60,000
East Middle School Community School Coordination Services	UPMC Western Behavioral Health at Safe Harbor	\$60,000
Edison Elementary Community School Coordination Services	Achievement Center	\$60,000
Edison Afterschool Program	Achievement Center	\$27,000
Elk Valley Elementary Community School Coordination Services	Achievement Center	\$60,000
Emergency Needs Response	Various	\$286,000
Erie FREE Taxes	Various	\$222,000
Harding Elementary Community School Coordination Services	YMCA of Greater Erie	\$60,000
I Can See	Union City Area School District Foundation	\$7,000
Imagination Library	Various	\$309,700
Iroquois Elementary Community School Coordination Services	The Susan Hirt Hagen Center for Community Outreach, Research, and Evaluation	\$60,000
Kindergarten Readiness Summer Program	Iroquois Elementary School	\$10,000
McKinley Elementary Community School Coordination Services	Edinboro University	\$60,000

Program/Service	Provider	Investment
McKinley Elementary Out-of-School Time Coordination Services	YMCA of Greater Erie	\$11,300
Mental Health Liaison Services	Achievement Center	\$52,500
Mirror Program	USCRI International Institute of Erie	\$85,000
Neighborhood Organization Community Impact Mini-Grants	Various	\$13,000
Perry Elementary Community School Coordination Services	Erie Family Center	\$60,000
Pfeiffer-Burleigh Elementary Community School Coordination Services	Family Services of NWPA	\$60,000
Pfeiffer-Burleigh Out-of-School Time Coordination Services	Family Services of NWPA	\$45,000
PLAYtime	Erie Playhouse	\$20,000
Positive Youth Development	The Susan Hirt Hagen Center for Community Outreach, Research, and Evaluation	\$80,000
Raising Readers Coordination Services	Various	\$202,200
Strong Vincent Middle School Community School Coordination Services	Gannon University	\$60,000
Strong Vincent Middle School Out-of-School Time Coordination Services	Gannon University	\$45,000
Success By 6	Early Connections	\$30,000
Trauma-Focused Cognitive Behavioral Therapy at McKinley and Pfeiffer-Burleigh Community Schools	Family Services of NWPA	\$20,000
United Way Scholarships through Erie's Future Fund	Early Connections	\$180,000
Women's Recovery Center	Hamot Health Foundation	\$37,500

Total Local Investment:

\$3,048,025

UnitedWayErie.org/Funding

MISSION:
CRUSH POVERTY



United Way of Erie County





MISSION:
CRUSH POVERTY

THANK YOU!

CONTINUES



United Way of Erie County