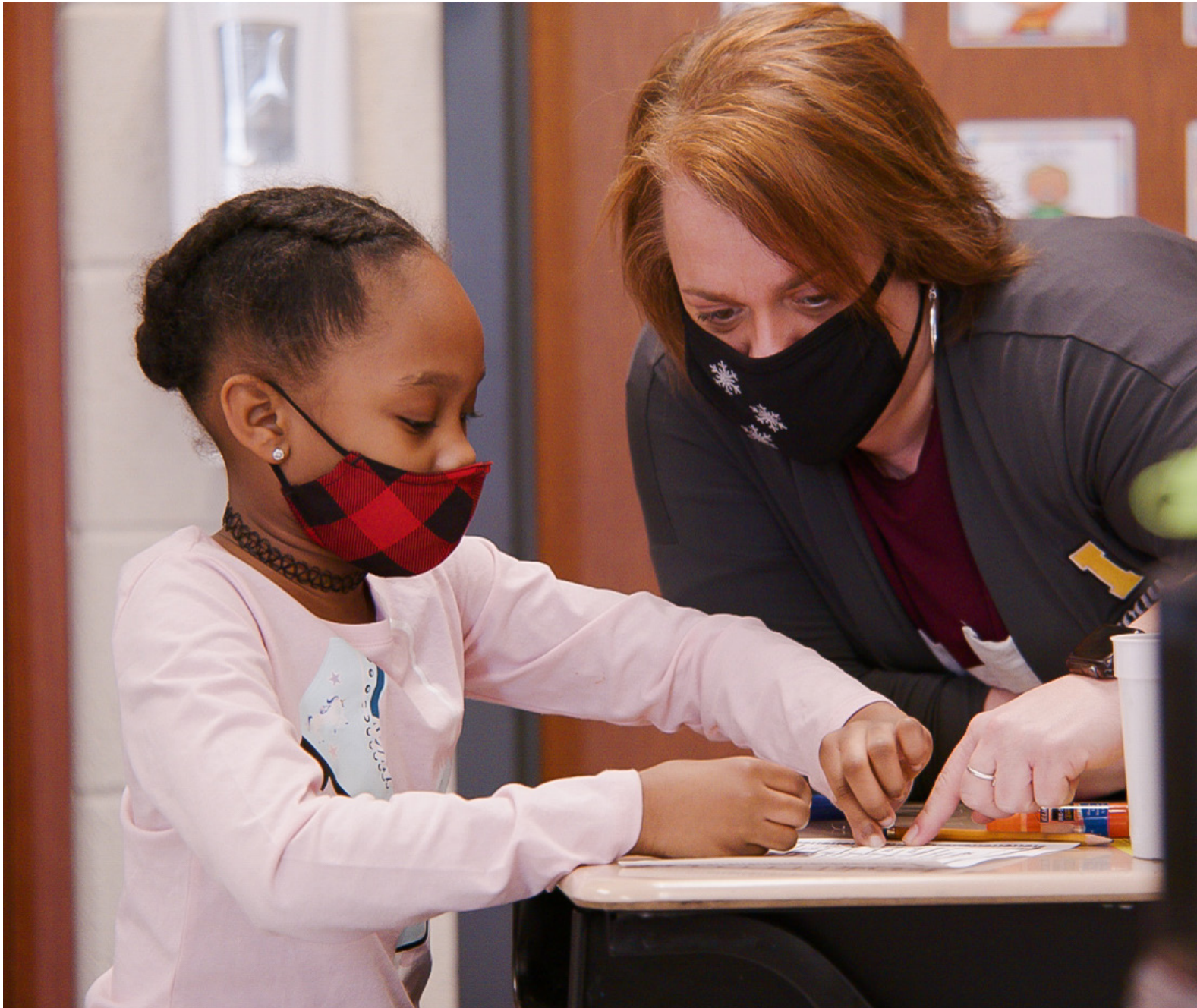


UNITED WAY
**COMMUNITY
SCHOOLS**

- ➔ BRING RESOURCES into the school building that address specific barriers preventing students from being successful.
- ➔ ARE HUBS rich with resources for students and their families.
- ➔ CREATE A POSITIVE CULTURE of learning and achievement



BUILDING A STRONGER ERIE COUNTY, ONE CHILD AT A TIME

BARRIER BEAST



trauma

unsafe home
environment

bullying

mental
health

hygiene

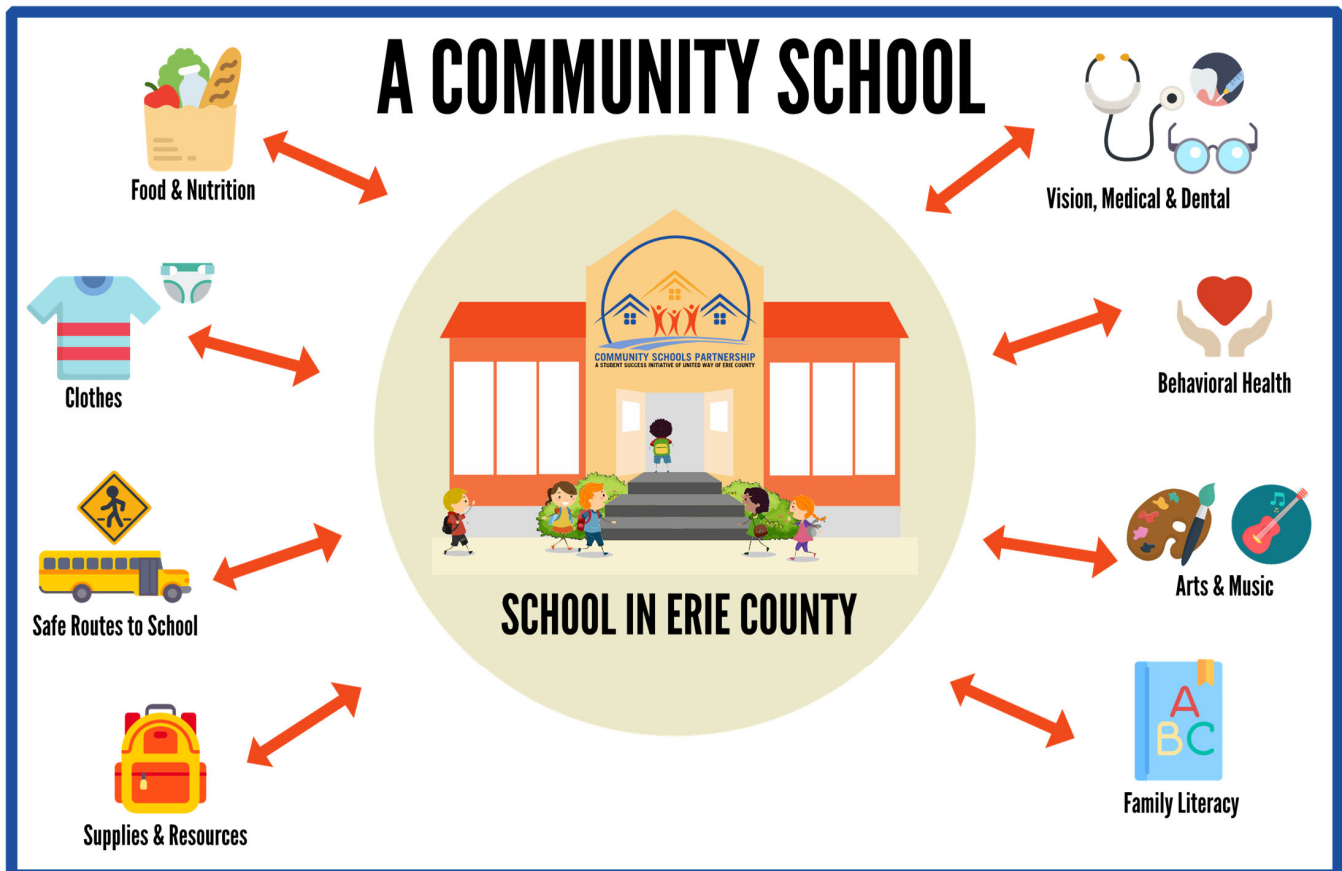
transportation

hunger

homelessness

improper
clothes

poor eye
sight



KEY FEATURES



Community Schools rely on many partners, including school districts, social service organizations, businesses, the public sector, universities and more. Below are the key features that must exist for a successful Community School to be established.



BACKBONE ORGANIZATION – As the backbone organization, United Way of Erie County employs the Community School Directors (CSDs), provides technical assistance, maintains partnership alignment, drives impact, ensures clear communication and assures the work is being implemented with fidelity by all partners and meeting goals and measurements. Collaboration among multiple organizations is simple in theory, but complex in practice. That is why United Way serves as the backbone organization for each Community School located in Erie County.



COMMUNITY SCHOOL DIRECTOR – Works closely with the principal and Community School Leadership Team. Guides ongoing needs and resource assessment, developing the Action Plan that guides all of the non-academic activities in the school. Ensures all programming is aligned with the needs identified in the Action Plan and implemented according to a partnership agreement. This position is employed by United Way to ensure fidelity to the Community School model.



CORPORATE PARTNER – Commits to financial support for a minimum three-year cycle. A corporate partner may designate one (or more) champion to serve as liaison between corporate partner and community school, including engaging with the Community School Director to identify and oversee other employees as volunteers.



LEAD PARTNER – Community-based organization with direct connections to the school. The Lead Partner provides guidance and some of the resources identified as high need at the school but works with the CSD and United Way to secure additional resources to support school strategies.



DATA-DRIVEN ACCOUNTABILITY – Every resource and program that is brought into the community school must be aligned with the Action Plan, developed by the Community School Director and United Way with input from partners. The Action Plan is updated regularly and ensures all activities in the school are aligned to address identified needs to breakdown barriers to learning. Detailed strategies, action steps, outputs, outcomes, indicators, data sources and measurements are included for four domains: student, family, school and district.



United Way of Erie County

PARTNERS

United Way community schools level the playing field for students facing barriers to success in school. They also provide supports to families to help them become and stay stable. There are **eleven** United Way community schools serving **6,500+** children in four Erie County School Districts: Erie's Public Schools, Girard School District, Iroquois School District and Union City School District.

COMMUNITY SCHOOL	LEAD PARTNER	CORPORATE PARTNER(S)
ERIE'S PUBLIC SCHOOLS		
East Middle School	UPMC Western Behavioral Health at Safe Harbor	Hamot Health Foundation
Edison Elementary School	Achievement Center	Wabtec Corporation
Diehl Elementary School	Mercyhurst University	Accudyn Products Inc. American Tinning & Galvanizing Custom Engineering Lincoln Recycling McInnes Rolled Rings Reddog Industries, Inc. Smith Provision Company, Inc. Team Hardinger
Harding Elementary School	YMCA of Greater Erie	Eriez Magnetics
McKinley Elementary School	Edinboro University	Women United for Community Schools
Perry Elementary School	Erie Family Center	Eriez Magnetics
Pfeiffer-Burleigh Elementary School	Family Services of NWPA	Erie Insurance
Strong Vincent Middle School	Gannon University	Highmark Blue Cross Blue Shield
GIRARD SCHOOL DISTRICT		
Elk Valley Elementary School	Achievement Center	Bonnell's Auto Group Matrix Tool, Inc. Reed Manufacturing
IROQUOIS SCHOOL DISTRICT		
Iroquois Elementary School	Penn State CORE	Reed Manufacturing TechnipFMC Widget Financial
UNION CITY SCHOOL DISTRICT		
Union City Elementary	TBA	Women United for Community Schools Anonymous