



**OUR MISSION  
IS TO HELP  
THEM SUCCEED.**

**ARE YOU IN?**







United Way is a **local** social impact organization working to break the cycle of poverty in Erie County.

---

The money **RAISED** in Erie County **STAYS** in Erie County!



# Total Local Investment:

\$3,154,680

**MISSION:**

**CRUSH POVERTY**

**[UnitedWayErie.org/Funding](https://UnitedWayErie.org/Funding)**

To break the  
cycle of poverty,  
we know  
education  
is the key.



# STUDENT SUCCESS IMPACT INVESTMENTS

Children from low-income households face many challenges that keep them from learning in school. Your support helps break down and remove barriers so ALL children can be successful. Your support is helping to level the playing field for student success.





# STUDENT SUCCESS IMPACT INVESTMENTS

**IMAGINATION LIBRARY** = providing FREE high-quality, age and developmentally appropriate books monthly to children from birth to their fifth birthday

Outcome: Children in Erie County enter kindergarten ready to learn.

*Total investment: \$301,700*

## Your investment in action:

- 846,000 books distributed
- 25,011 children served

*Since 2013*





# STUDENT SUCCESS IMPACT INVESTMENTS

**RAISING READERS** = making sure children are reading at grade-level so they don't fall behind and drop out of school

Outcome: Children in Erie County stay on track to graduate.

*Total investment: \$334,750*

## Your investment in action:

- 9,335 kindergarten registration forms distributed
- 465 kindergarten readiness toolkits distributed

*July 1, 2020 – June 30, 2021*







# STUDENT SUCCESS IMPACT INVESTMENTS

**COMMUNITY SCHOOLS** = stripping away non-academic barriers to learning that low-income children face, from basic needs to trauma counseling to dental/vision health supports and much more.

Outcome: Students in Erie County achieve academic success.

*Total investment: \$2,052,500*

## Your investment in action:

- 10 community schools serving 5,700 students
- 91 partners providing services, donations or programming
- 97 engagement programs offered

UNITED WAY  
**COMMUNITY  
SCHOOLS**









# WHAT ARE COMMUNITY SCHOOLS?

The Community Schools Model aligns community and school resources to address the specific barriers preventing students, and their families, from being successful.

This evidence-based model supports student success by removing the Barrier Beast!





# ***BARRIER BEAST***



**trauma**

**unsafe home  
environment**

**bullying**

**transportation**

**mental  
health**

**hygiene**

**hunger**

**homelessness**

**poor eye  
sight**

**improper  
clothes**



Food & Nutrition



Clothes



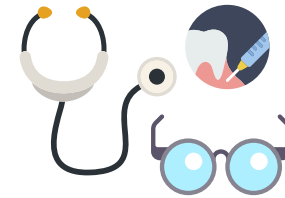
Safe Routes to School



Supplies & Resources



SCHOOL IN ERIE COUNTY



Vision, Medical & Dental



Behavioral Health



Arts & Music



Family Literacy



United Way of Erie County



# FAMILY STABILITY IMPACT INVESTMENTS

Children are affected not only by their school environment, but all by what happens out of school. Family stability directly impacts how a child learns and performs in school. Your support provides resources to help families become and stay stable.



# FAMILY STABILITY IMPACT INVESTMENTS

**ERIE FREE TAXES** = helping hard working low-to moderate income families get free tax preparation and take advantage of the earned income tax credit

Outcome: Families in Erie County are financially stable.

***Total Investment: \$214,230***

## Your investment in action:

- 5,258 in local federal tax returns files totaling \$8.9 million in refunds (2020 returns)

**Earn It**  
**Keep It**  
**Save It**  
United Way Erie FREE Taxes









# FAMILY STABILITY IMPACT INVESTMENTS

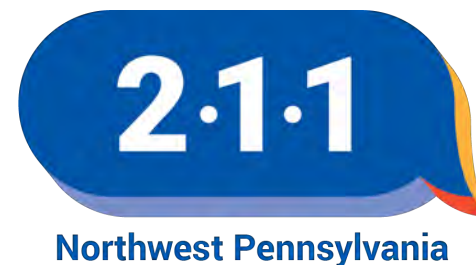
**211 HELPLINE** = connecting individuals and families to the help they need when they need it so that the home environment is stable and supported.

Outcome: Quick connection to help for anyone in Erie County.

*Total investment: \$114,000*

## Your investment in action:

- 5,377 referrals to assistance
  - 6,716 services in 211 database
- July 1, 2020 - June 30, 2021*







# OTHER STRATEGIC INVESTMENTS

**OTHER STRATEGIC INVESTMENTS** = responding in times of emergencies and to priority community needs

Outcome: Helping the Erie County community with the unexpected.

*Total investment: \$137,500*





# 2021-2022 UNITED WAY FUNDED IMPACT PARTNERS

**Achievement Center**

**Blue Coats Initiative of Erie's Public Schools**

**Booker T. Washington Center**

**Diehl Elementary School**

**Early Connections**

**East Middle School**

**Edison Elementary School**

**Elk Valley Elementary School**

**Erie Family Center Erie Playhouse**

**Family Services of NWPA**

**Gannon University**

**Greater Erie Community Action Committee**

**Hamot Health Foundation**

**Harding Elementary School**

**Iroquois Elementary School**

**McKinley Elementary School**

**Mercyhurst University**

**Multicultural Community Resource Center**

**National Night Out Event Organizers**

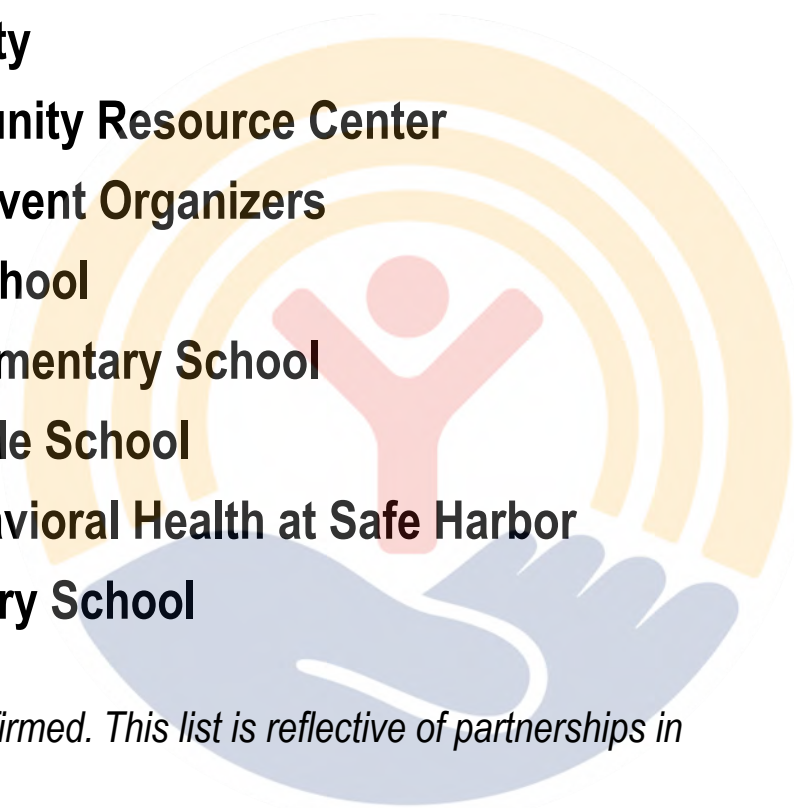
**Perry Elementary School**

**Pfeiffer-Burleigh Elementary School**

**Strong Vincent Middle School**

**UPMC Western Behavioral Health at Safe Harbor**

**Union City Elementary School**



*United Way's funding impact partner will be added to throughout the year as other partnerships are confirmed. This list is reflective of partnerships in place as July 15, 2021.*





**OUR MISSION  
IS TO HELP  
THEM SUCCEED.**

**ARE YOU IN?**

